



# COLORRIZE

Redesign your floor –  
don't tear it out.

## ColorRize by Dr. Schutz:

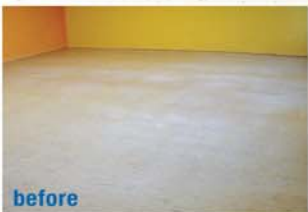
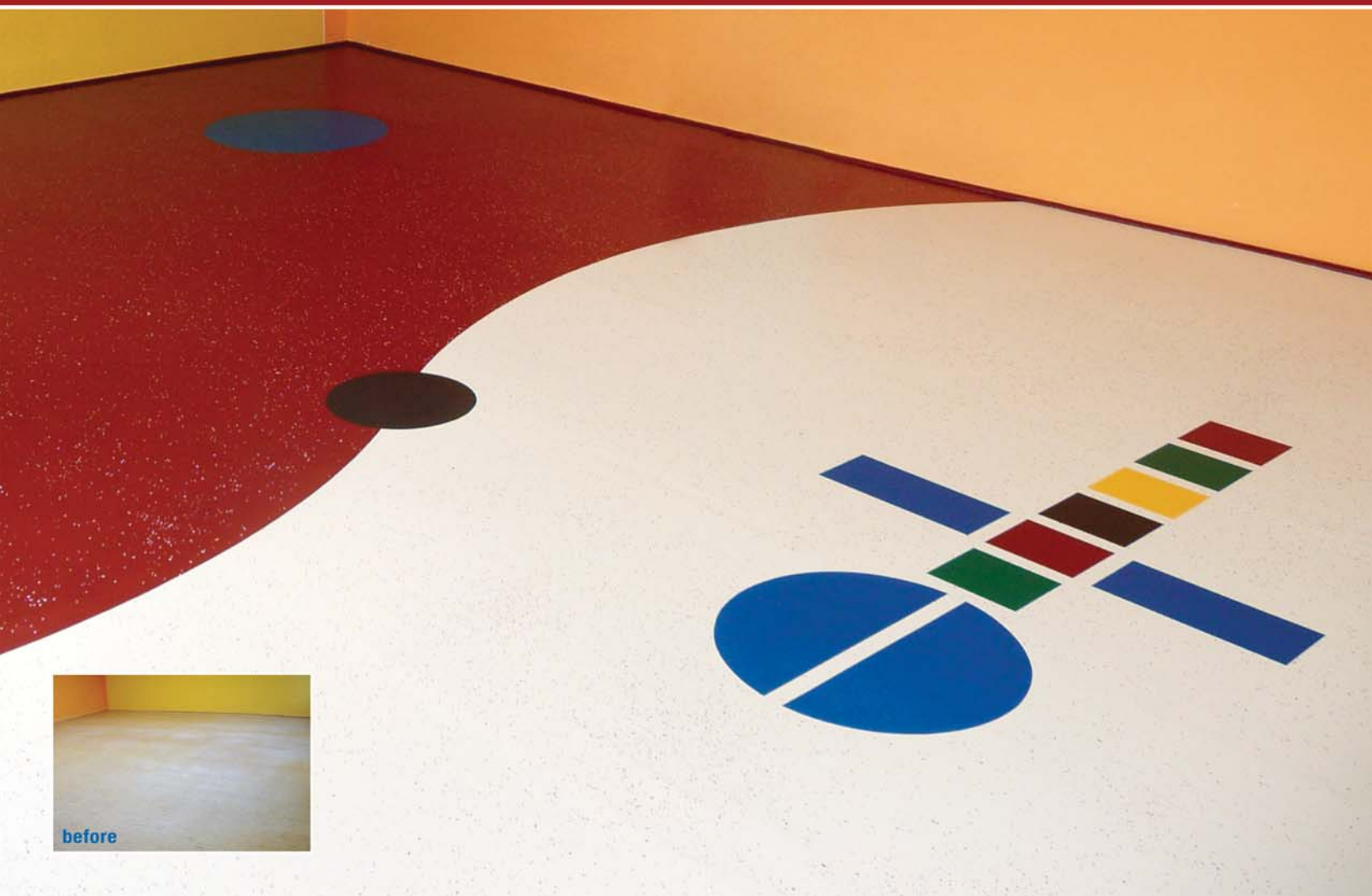
Available in 14 Standard and over 200 custom colors.



Millions of ft<sup>2</sup> of existing floors have to be renovated, because they are used, worn, or simply no longer in keeping with the aesthetic of the times. However, to remove the flooring and lay a new

one means long business interruption, high disposal costs, the expense of laying new flooring, as well as an unnecessary burden on the environment

**There's nothing to be done, your floor's had it?  
Its time to change the way you think!**





## The solution for your floor: **ColorRize** – colorful new creations according to your individual taste.

- **Unlimited possibilities for design and lay-out**

with an open choice of color, a variety of chip combinations and logos, or other inlays selected by you, personally

- **there's no need to replace the covering,**  
nor are there any disposal costs

- **Business interruption in the building is minimized**

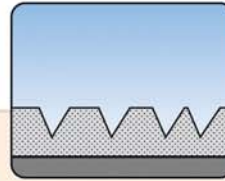
by following 2 procedural steps instead of 5!

- **initial investment soon pays for itself**

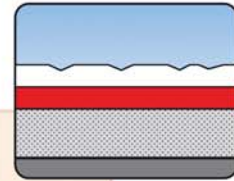
due to easier maintenance;  
the initial care is even included in the price

- **eco-friendly,**

because the environment needn't be burdened  
by unnecessary waste water, noise, pollution and disposed flooring



Without PU protective layer.  
Heavy use and wear, together  
with dirt particles can cause per-  
manent damage to the surface  
structure.



ColorRize and Waxnomor a brand new  
design and excellent long term  
protection.

- ! **Continuously effective  
in regular use for:**

Department stores, shops, offices, banks,  
public departments, hospitals, medical practices,  
nursing homes, schools, kindergartens, sports and  
multi-purpose halls, restaurants, bars, hotels, car  
showrooms, hairdressing salons, supermarkets,  
factories etc.

- ! **Especially suitable for:**

All Hard Flooring Surfaces.  
including resilient, wood, concrete/stone and more

- ! **Most Important:**

- environmentally friendly alternative to  
complete floor replacement,  
which saves time and expense
- Absolute freedom to select possibilities  
for design and lay-out-

**ColorRize – the solution  
for your floor**

Production hall IPEX,  
Osaka, Japan

Big Star Boutique,  
Paris, France

Chelmsford University,  
Chelmsford, England

