



# CONCRETE / STONE and CERAMIC FLOORS

Protection for concrete,  
stone, ceramic and other industrial  
floors:

**Extra long lifetime's use  
despite heavy wear and use.**



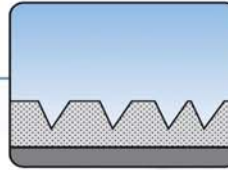
Industrial and stone floors are robust, have a range of attractive surfaces and are very fashionable. However, they are still subject to outside influences, such as grains of sand and grit, which scratch

the floor. Or dyes, disinfectants and plasticizers which migrate into the floor. The result is that the surface loses its attractive sheen – and requires more and more care and cleaning.

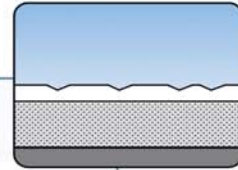




Extremely robust with Waxnomor:



Without PU protective layer. Hard wear and dirt particles can cause permanent damage to the surface structure.



Waxnomor protects the surface and makes the floor especially easy to clean and care for.

## The appropriate solution: Dr. Schutz long term sealers.

- **provide 6 times higher long term protection**  
confirmed by independent surveys
- **protect against typical surface damage,**  
such as friction wear and scratches
- **minimize cleaning costs**  
because floors don't get so dirty so fast
- **make floors resistant against chemical dyes and plasticizers**  
using Marknomor
- **guarantee non-slip surface in accordance with regulatory standards**  
with Slipnomor (call for testing documents)
- **ensure that floors look attractive and well cared**  
thanks to an extra robust sealing layer



### Continuously effective in regular use for:

Department stores, shops, offices, banks, public departments, hospitals, medical practices, nursing homes, schools, kindergartens, sports and multi-purpose halls, bars, hotels, car showrooms etc.



### Especially suitable for:

Concrete, Stone, Ceramics, Epoxy, Engineered Stone and self levelling floors,



### Most Important:

- increase the long term protection of the floor by a factor of 6
- strongly resist surface damage and chemicals
- non-slip, in accordance with ASTM, DIN, and EN

8 Store,

Intersport Store,

NATO Hangar,

